

This document will trace the progress of the building at the University of KwaZulu-Natal, Chemical Engineering Building, basement, Pollution Research Group. This document will be updated every week to keep track and progress of the building taking place and at large serve as the building portfolio.

29 January 2016



Figure 1: Basement 1 slab foundation.

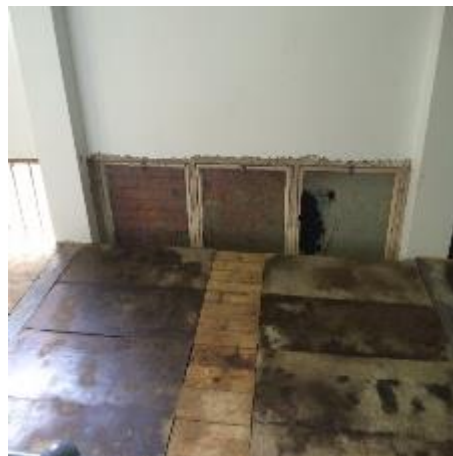


Figure 2: Windows behind the wall caused delays.



Figure 3: Basement 2 LaDePa region with scaffolding .



Figure 4: Wash station with drilled hole and filters removed.

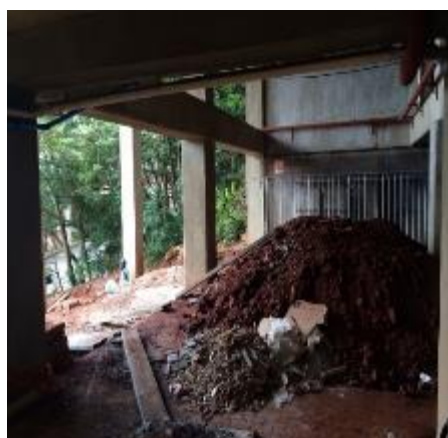


Figure 5: Gas cylinder storage area 1.



Figure 6: Gas cylinder storage area 2.

5 February 2016



Figure 1: Basement 1 slab foundation with metal reinforcement layer.



Figure 2: Windows panes removed.



Figure 3: Basement 2 LaDePa region with scaffolding.



Figure 4: Wash station with hole and scaffolding staging and filters removed.



Figure 5: Gas cylinder storage area 1.



Figure 6: Gas cylinder storage area 2.

12 February 2016



Figure 1: Basement 1 slab foundation with metal reinforcement grid.



Figure 2: Hole made for the wash station.



Figure 3: Basement 2 LaDePa region with scaffolding.



Figure 4: Wash station with hole and scaffolding staging and filters removed.



Figure 5: Gas cylinder storage area 1.



Figure 6: Gas cylinder storage area 2.

19 February 2016



Figure 1: Cementing of Basement 1.



Figure 2: Hole made for wash station.



Figure 3: Basement 2 LaDePa region with scaffolding.



Figure 4: Wash station with hole and scaffolding staging.



Figure 5: Gas cylinder storage area 1.



Figure 6: Gas cylinder storage area 2.

26 February 2016



Figure 1: Basement 1 slab finished.



Figure 2: Removal of tiles in basement 1.



Figure 3: All labotary consumables and some equipment are currently in the office are.



Figure 4: LaDepa region with scafflodng underneath the finished slab.



Figure 5: Gas cylinder storage area 1.



Figure 6: Gas cylinder storage area 2.

4 March 2016



Figure 1: Basement 1 slab finished.



Figure 2: Tiles in Basement 1 completely removed on the floor.



Figure 3: Concrete removed from the wash basin area.



Figure 4: LaDepa region scaffolding underneath the finished slab.



Figure 5: Gas cylinder storage area 1.



Figure 6: Gas cylinder storage area 2.

11 March 2016



Figure 1: Basement 1 slab finished, tiles completely removed from the whole Basement 1 floor.



Figure 2: LaDepa region scaffolding partially removed, coldroom is accessible.



Figure 3: New window installed on the wash basin wall area.



Figure 4: Tar concrete removed from the wash station.



Figure 5: Gas cylinder storage area 1 with concrete foundation and scaffolding.



Figure 6: Gas cylinder storage area 2.

18 March 2016



Figure 1: Basement 1 slab finished, tiles completely removed from the floor.



Figure 2: Sink area, scaffolding partially removed, coldroom is accessible.



Figure 3: New window installed on the wash basin wall area (outside).



Figure 4: New window installed on the LaDePa area, view from the inside.

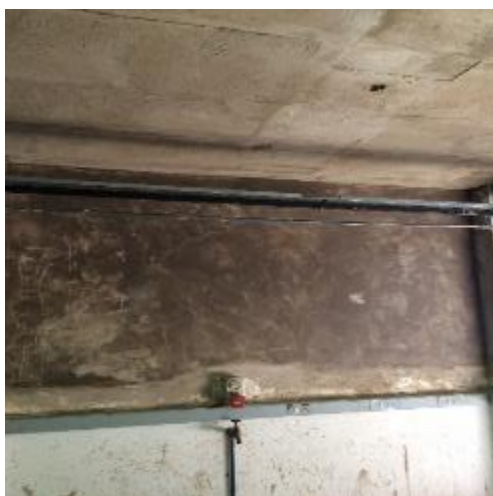


Figure 5: The window that was taken down and cause delays has been sealed.



Figure 6: Gas cylinder storage area 1 with concrete foundation and scaffolding.

15 April 2016



Figure 1: Partitioning of the lab.



Figure 2: Coldroom is accessible and the ladepa is moved back into place.



Figure 3: Wash station foundation preparation.



Figure 4: New window. LaDePa region (inside) and wash basin (outside).



Figure 5: Gas cylinder storage area 1 with scaffolding



Figure 6: Gas cylinder storage area 2 with scaffolding spanning across area 1 and 2.

22 April 2016



Figure 1: Partitioning of the lab.



Figure 2: Wash station area, foundation further dug up.



Figure 3: New slab foundation with grid layer (underpinning) View from the office window.



Figure 4: New slab foundation with grid layer (underpinning), above gas cylinder area 2.



Figure 5: Gas cylinder storage area 1 with scaffolding.



Figure 6: scaffolding spanning across the gas cylinder storage area 1 and area 2.

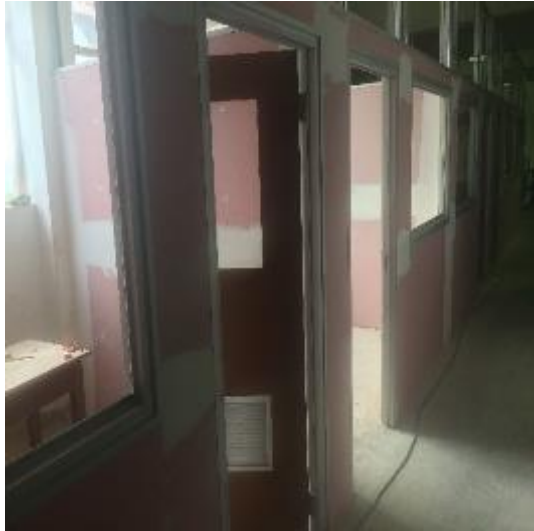


Figure 1: Lab partitioning, doors and window frames installed.



Figure 2: Wash basin foundation, covered with cement and protruding grid.



Figure 3: Slab layer completed outside the office area, above gas cylinder storage area 1.



Figure 4: Slab layer completed outside the office area, above gas cylinder storage area 1.

Digging (excavations) outside the wash area and emergency exit stairway.



10 June 2016



Figure 1: New office area with window frames installed, above gas cylinder storage area 1.



Figure 2: New office area closed up and plastered, above gas cylinder storage area 1.



Figure 3: Wash station area.



Figure 4: New office area sealed, outside view from PRG office entry.



Figure 5: Gas cylinder storage area 1.



Figure 6: Gas cylinder storage area 2.

