

This document aims to trace the progress of the building of the Pollution Research Group at the basement of Chemical Engineering Building, University of KwaZulu-Natal. This document will be updated regularly to keep track of the progress of the building alterations taking place.

29 January 2016



Figure 1: Basement 1 slab foundation.



Figure 2: Windows behind the wall caused delays.



Figure 3: Basement 2 LaDePa region with scaffolding .



Figure 4: Wash station with drilled hole and filters removed.



Figure 5: Gas cylinder storage area 1.



Figure 6: Gas cylinder storage area 2.

5 February 2016



Figure 1: Basement 1 slab foundation with metal reinforcement layer.



Figure 2: Windows panes removed.

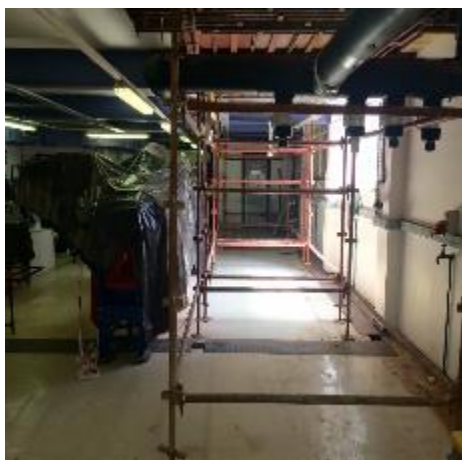


Figure 3: Basement 2 LaDePa region with scaffolding.



Figure 4: Wash station with hole and scaffolding staging and filters removed.



Figure 5: Gas cylinder storage area 1.



Figure 6: Gas cylinder storage area 2.



Figure 1: Basement 1 slab foundation with metal reinforcement grid.



Figure 2: Hole made for the wash station.



Figure 3: Basement 2 LaDePa region with scaffolding.



Figure 4: Wash station with hole and scaffolding staging and filters removed.



Figure 5: Gas cylinder storage area 1.



Figure 6: Gas cylinder storage area 2.

19 February 2016



Figure 1: Cementing of Basement 1.



Figure 2: Hole made for wash station.

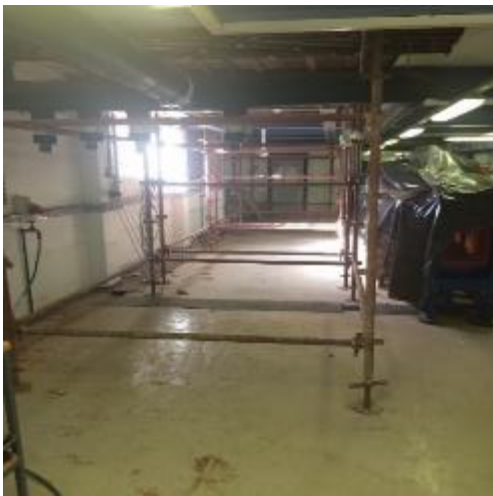


Figure 3: Basement 2 LaDePa region with scaffolding.



Figure 4: Wash station with hole and scaffolding staging.



Figure 5: Gas cylinder storage area 1.



Figure 6: Gas cylinder storage area 2.

26 February 2016



Figure 1: Basement 1 slab finished.



Figure 2: Removal of tiles in basement 1.



Figure 3: All labotary consumables and some equipment are currently in the office are.



Figure 4: LaDepa region with scaffolding underneath the finished slab.



Figure 5: Gas cylinder storage area 1.



Figure 6: Gas cylinder storage area 2.

4 March 2016



Figure 1: Basement 1 slab finished.



Figure 2: Tiles in Basement 1 completely removed on the floor.



Figure 3: Concrete removed from the wash basin area.



Figure 4: LaDepa region scaffolding underneath the finished slab.



Figure 5: Gas cylinder storage area 1.



Figure 6: Gas cylinder storage area 2.

11 March 2016



Figure 1: Basement 1 slab finished, tiles completely removed from the whole Basement 1 floor.



Figure 2: LaDepa region scaffolding partially removed, coldroom is accessible.



Figure 3: New window installed on the wash basin wall area.



Figure 4: Tar concrete removed from the wash station.



Figure 5: Gas cylinder storage area 1 with concrete foundation and scaffolding.



Figure 6: Gas cylinder storage area 2.

18 March 2016



Figure 1: Basement 1 slab finished, tiles completely removed from the floor.



Figure 2: Sink area, scaffolding partially removed, coldroom is accessible.



Figure 3: New window installed on the wash basin wall area (outside).



Figure 4: New window installed on the LaDePa area, view from the inside.



Figure 5: The window that was taken down and cause delays has been sealed.



Figure 6: Gas cylinder storage area 1 with concrete foundation and scaffolding.

15 April 2016



Figure 1: Partitioning of the lab.



Figure 2: Coldroom is accessible and the ladepa is moved back into place.



Figure 3: Wash station foundation preparation.



Figure 4: New window. LaDePa region (inside) and wash basin (outside).



Figure 5: Gas cylinder storage area 1 with scaffolding



Figure 6: Gas cylinder storage area 2 with scaffolding spanning across area 1 and 2.

22 April 2016



Figure 1: Partitioning of the lab.



Figure 2: Wash station area, foundation further dug up.



Figure 3: New slab foundation with grid layer (underpinning) View from the office window.



Figure 4: New slab foundation with grid layer (underpinning), above gas cylinder area 2.



Figure 5: Gas cylinder storage area 1 with scaffolding.
20 May 2016



Figure 6: scaffolding spanning across the gas cylinder storage area 1 and area 2.



Figure 1: Lab partitioning, doors and window frames installed.



Figure 2: Wash basin foundation, covered with cement and protruding grid.



Figure 3: Slab layer completed outside the office area, above gas cylinder storage area 1.



Figure 4: Slab layer completed outside the office area, above gas cylinder storage area 1.

Digging (excavations) outside the wash area and emergency exit stairway.



10 June 2016



Figure 1: New office area with window frames installed, above gas cylinder storage area 1.



Figure 2: New office area closed up and plastered, above gas cylinder storage area 1.



Figure 3: Wash station area.



Figure 4: New office area sealed, outside view from PRG office entry.



Figure 5: Gas cylinder storage area 1.



Figure 6: Gas cylinder storage area 2.

20 July 2016



Figure 1: Laboratory Floors refurbished with epoxy coating.



Figure 2: Laboratory work benchtops cleared of equipment, to be refurbished.

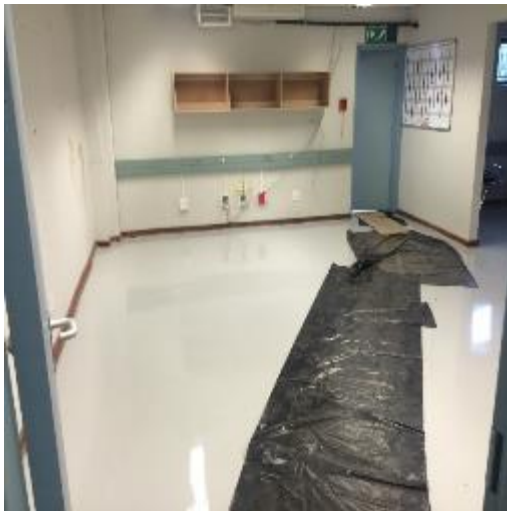


Figure 3: Office area floors with epoxy coating.

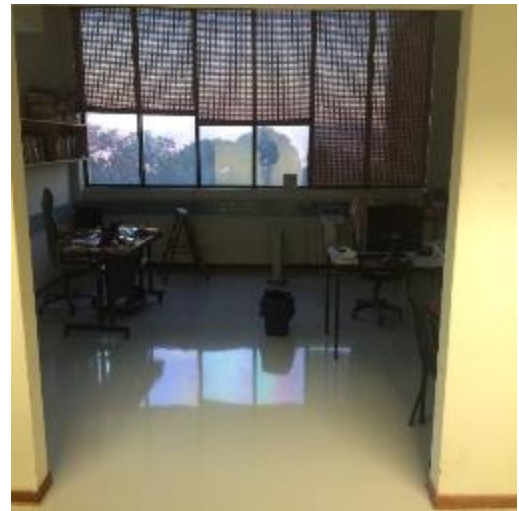


Figure 4: Office area floors with epoxy coating.



Figure 5: Gas cylinder storage area 1.



Figure 6: Gas cylinder storage area 2.