

Building Portfolio

This document tracks the progress of the building and renovation of the Pollution Research Group in the basement of the Chemical Engineering Building at the University of KwaZulu-Natal. This document provides a regular update of the progress from the start of the alterations up to the date of completion.

29 JANUARY 2016	2
5 FEBRUARY 2016	3
12 FEBRUARY 2016	4
19 FEBRUARY 2016	5
26 FEBRUARY 2016	6
4 MARCH 2016	7
11 MARCH 2016	8
18 MARCH 2016	9
15 APRIL 2016	10
22 APRIL 2016	11
20 MAY 2016	12
10 JUNE 2016	13
20 JULY 2016	14
26 AUGUST 2016	15
2 SEPTEMBER 2016	16
9 SEPTEMBER 2016	17
29 SEPTEMBER 2016	18
OCT-NOV 2016	19
25 NOV 2016	20
2 DECEMBER 2016	21
9 DEC 2016	22
20 JANUARY 2017	23
15 FEB 2017	24
FEB – MARCH 2017	25
24 MARCH 2017	26
7-12 APRIL 2017	27
21 APRIL 2017	28
5 MAY 2017	29
19 MAY 2017	30
26 MAY 2017	31
FEB 2018	32
20 FEB 2018	33
2 MARCH 2018	34
MEZZANINE STAIRS	35
BASEMENT 2 OVERVIEW	35
BASEMENT 1 OVERVIEW	35
GENERAL OFFICE VIEW: MAIN OFFICE AREA	36
TECHNICIANS AREA	36



Figure 1: Basement 1 slab foundation.



Figure 2: Windows behind the wall caused delays.



Figure 3: Basement 2 LaDePa region with scaffolding .



Figure 4: Wash station with drilled hole and filters removed.

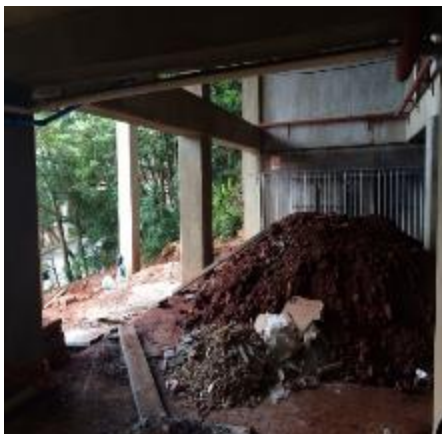


Figure 5: Gas cylinder storage area 1.



Figure 6: Gas cylinder storage area 2.

5 FEBRUARY 2016



Figure 1: Basement 1 slab foundation with metal reinforcement layer.



Figure 2: Windows panes removed.



Figure 3: Basement 2 LaDePa region with scaffolding.



Figure 4: Wash station with hole and scaffolding staging and filters removed.



Figure 5: Gas cylinder storage area 1.



Figure 6: Gas cylinder storage area 2.

12 FEBRUARY 2016



Figure 1: Basement 1 slab foundation with metal reinforcement grid.



Figure 2: Hole made for the wash station.



Figure 3: Basement 2 LaDePa region with scaffolding.



Figure 4: Wash station with hole and scaffolding staging and filters removed.



Figure 5: Gas cylinder storage area 1.



Figure 6: Gas cylinder storage area 2.

19 FEBRUARY 2016



Figure 1: Cementing of Basement 1.



Figure 2: Hole made for wash station.



Figure 3: Basement 2 LaDePa region with scaffolding.



Figure 4: Wash station with hole and scaffolding staging.



Figure 5: Gas cylinder storage area 1.



Figure 6: Gas cylinder storage area 2.

26 FEBRUARY 2016



Figure 1: Basement 1 slab finished.



Figure 2: Removal of tiles in basement 1.



Figure 3: All labortary consumables and some equipment are currently in the office are.



Figure 4: LaDepa region with scaffloding underneath the finished slab.



Figure 5: Gas cylinder storage area 1.



Figure 6: Gas cylinder storage area 2.

4 MARCH 2016



Figure 1: Basement 1 slab finished.



Figure 2: Tiles in Basement 1 completely removed on the floor.



Figure 3: Concrete removed for the wash basin area.



Figure 4: LaDepa region scaffolding underneath the finished slab.



Figure 5: Gas cylinder storage area 1.



Figure 6: Gas cylinder storage area 2.

11 MARCH 2016



Figure 1: Basement 1 slab finished, tiles completely removed from the whole Basement 1 floor.



Figure 2: LaDepa region scaffolding partially removed, coldroom is accessible.



Figure 3: New window installed on the wash basin wall area.



Figure 4: Tar concrete removed from the wash station.



Figure 5: Gas cylinder storage area 1 with concrete foundation and scaffolding.



Figure 6: Gas cylinder storage area 2.

18 MARCH 2016



Figure 1: Basement 1 slab finished, tiles completely removed from the floor.



Figure 2: Sink area, scaffolding partially removed, coldroom is accessible.



Figure 3: New window installed on the wash basin wall area (outside).



Figure 4: New window installed on the LaDePa area, view from the inside.



Figure 5: The window that was taken down and cause delays has been sealed.



Figure 6: Gas cylinder storage area 1 with concrete foundation and scaffolding.

15 APRIL 2016



Figure 1: Partitioning of the lab.



Figure 2: Coldroom is accessible and the ladepa is moved back into place.



Figure 3: Wash station foundation preparation.



Figure 4: New window. LaDePa region (inside) and wash basin (outside).



Figure 5: Gas cylinder storage area 1.



Figure 6: Gas cylinder storage area 2

22 APRIL 2016



Figure 1: Partitioning of the lab.



Figure 2: Wash station area, foundation further dug up.



Figure 3: New slab foundation with grid layer (underpinning).



Figure 4: New slab foundation with grid layer (underpinning).



Figure 5: Gas cylinder storage area 1 with scaffolding.



Figure 6: scaffolding spanning across the gas cylinder storage area 1 and area 2.

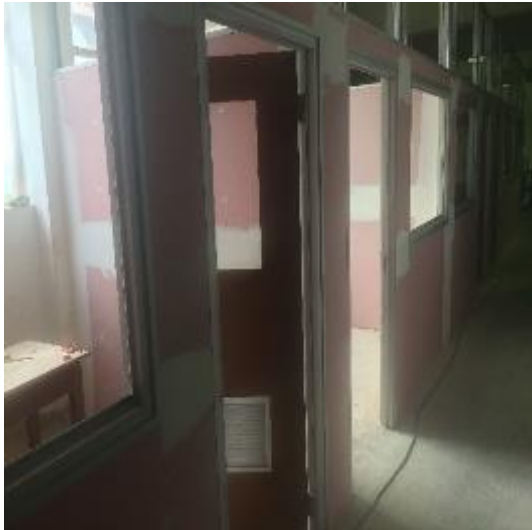


Figure 1: Lab partitioning, doors and window frames installed.



Figure 2: Wash basin foundation, covered with cement and protruding grid.



Figure 3: Slab layer completed outside the office area, above gas cylinder storage area 1.



Figure 4: Slab layer completed outside the office area, above gas cylinder storage area 1.

Digging (excavations) outside the wash area and emergency exit stairway.



10 JUNE 2016



Figure 1: New office area with window frames installed, above gas cylinder storage area 1.



Figure 2: New office area closed up and plastered, above gas cylinder storage area 1.



Figure 3: Wash station area.



Figure 4: New office area sealed, outside view from PRG office entry.



Figure 5: Gas cylinder storage area 1.



Figure 6: Gas cylinder storage area 2.

20 JULY 2016



Figure 1: Laboratory Floors refurbished with epoxy coating.



Figure 2: Laboratory work benchtops cleared of equipment, to be refurbished.

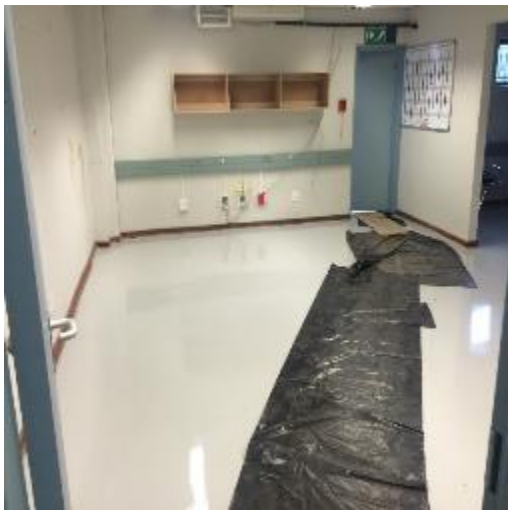


Figure 3: Office area floors epoxy coating.

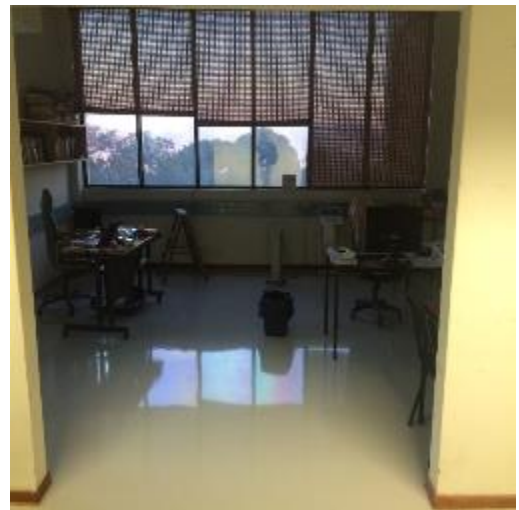


Figure 4: Office area floors epoxy coating.



Figure 5: Equipment moved into the office area.



Figure 6: Wash station.

26 AUGUST 2016



Figure 1: Partitioning of the new lab area/old postgraduate area.



Figure 2: Door frame fixed into the new lab area/ old postgraduate area.



Figure 3: New office area paint first coat.



Figure 4: New office area paint first coat.



Figure 5: Partitions with first paint coat.



Figure 6: Gas cylinder storage area lift shaft.

2 SEPTEMBER 2016



Figure 1: Damaged window between lab and office arera.



Figure 2: Wall to be broken down outside basement lift (done in July).



Figure 3.1: Hole made on new office area wall.



Figure 3.2: Outside the hole of the office area.



Figure 4.1: Wash station area completed. Gates and stairs to be changed.



Figure 4.2: Problem encountered with the narrow gates fitted for the wash area.

9 SEPTEMBER 2016



Figure 1: Partitioning of the new lab area/old postgraduate area.



Figure 2: Door frame fixed into the new lab area/ old postgraduate area.



Figure 3: Lift shaft to gas storage areas



Figure 4: Beam spalding repaired



Figure 1: Partitioning of the new lab area/old postgraduate area first coat.



Figure 2: Lab partitions second coat of paint.

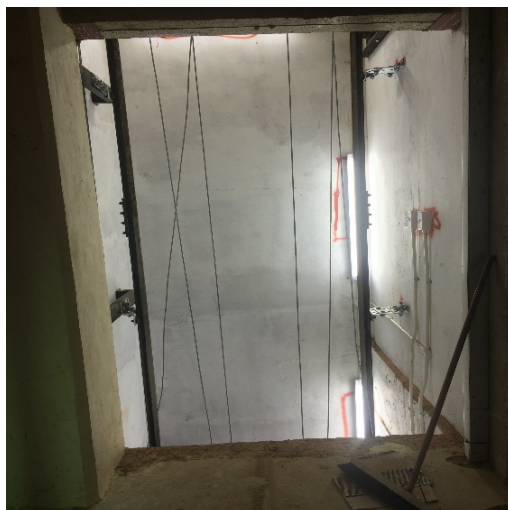


Figure 3: Lift shaft to gas storage areas.



Figure 4: Gate for the gas cylinder storage area.



Figure 5: Wash station stair case changed.

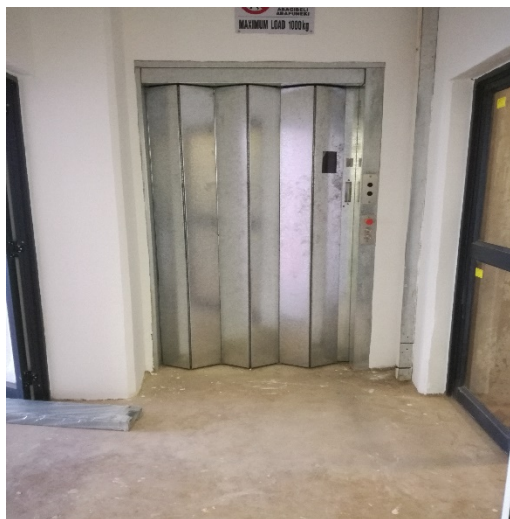


Figure 1: New lift at the foyer.



Figure 2: Wall broken down outside basement lift.



Figure 3.1: New office area wall replenished after lift being completed.



Figure 3.2: New window and walls in the new office area.



Figure 4.1: Lift cover in gas area storage area.



Figure 4.2: New lift from the gas storage area.

25 Nov 2016



Figure 1: New door and lift entrance (foyer).



Figure 2: New foyer and ramp in progress.



Figure 3.1: New benchtops fitted in partitions.



Figure 3.2: New lights fitted in partitions



Figure 4.1: Work done on trunkings.



Figure 4.2: Basement area fitted with a fence.

2 DECEMBER 2016



Figure 1: Door between meeting lounge and new office area.



Figure 2: New trunking and step fitted on the meeting lounge side.



Figure 3.1: New lights fitted and work done on windows in the new office area.



Figure 3.2: New lights and trunking fitted on the new office area.



Figure 4.1: Old trunking cables completely removed on walking path.



Figure 4.2: Chemical storage room new doors fitted.

9 DEC 2016



Figure 1: New step on the boardroom area door.



Figure 2: New foyer ramp from the old basement lift finished.



Figure 3.1: Finishes on the new office area walls.



Figure 3.2: Tilling on new office area



Figure 4.1: Work done on trunking in the basement and mezzanine level.

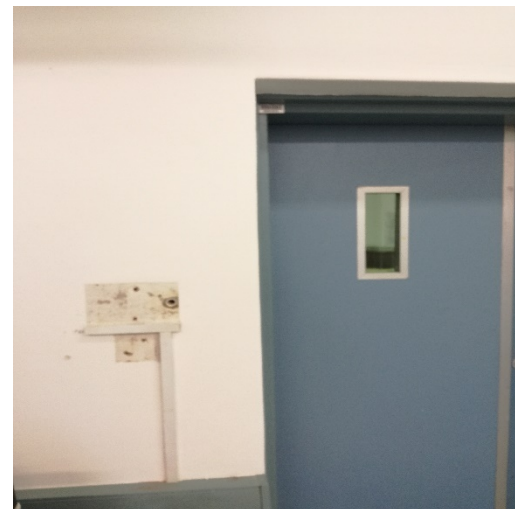


Figure 5: Access control systems removed on office/lab double door.



Figure 1: Workstations and gas lines cleared for carpenters.



Figure 2: Cleanroom workstations and gas lines cleared for carpenters.



Figure 3: Mezzanine work stations cleared with frames remaining for carpenters.



Figure 4: New office area fitted with air conditioners.

15 FEB 2017



Figure 1: Removal of workstations and cupboards.



Figure 2: Removal of workstations and cupboards.



Figure 3.1: Laboratory floors completely stripped.



Figure 3.2: Clean room floors completely cleared.



Figure 4.1: Installation of bases for the cupboards.



Figure 5: Cupboards installations.

FEB – MARCH 2017



Figure 1: Granite tops fitting on island stations.



Figure 2: Granite tops fitting in clean room.



Figure 3.1: Granite tops fitting in clean room.



Figure 3.2: Granite tops fitting in sink area.

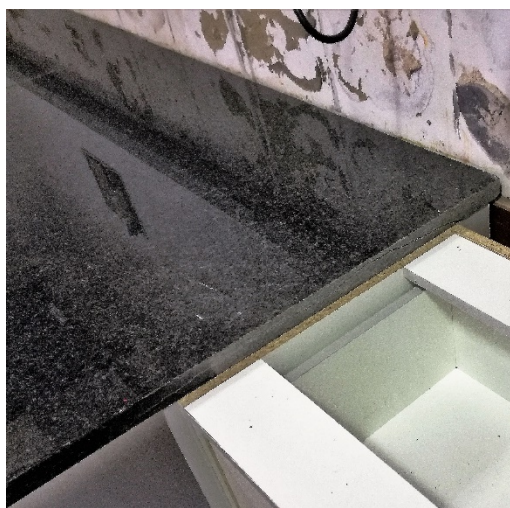


Figure 4.1: A crack on a fitted granite.



Figure 5: Cracked granite removed .

24 MARCH 2017



Figure 1: Island granite replaced, tiles removed without any authorization.



Figure 2: Drawers fitted only on these cupboards.



Figure 3: Mezzanine level granite fitted.

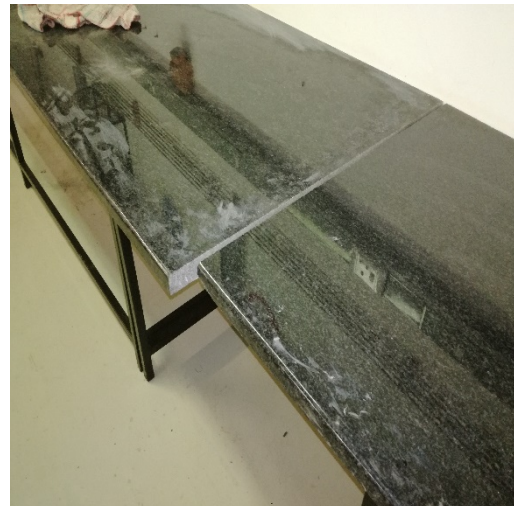


Figure 4: Mezzanine granite still to be cut.

<https://goo.gl/photos/q5apMG1bbGTggHNHA>

7-12 APRIL 2017



Figure 1: First coat of paint on the ramp.



Figure 2: First coat of paint on foyer section.



Figure 3.1: Meeting room door completed.



Figure 3.2: Office door completed.



Figure 4: New office area completed.



Figure 5: Doors and splash backs fitted on cupboards.

21 APRIL 2017



Figure 1: Second coat of paint on ramp.

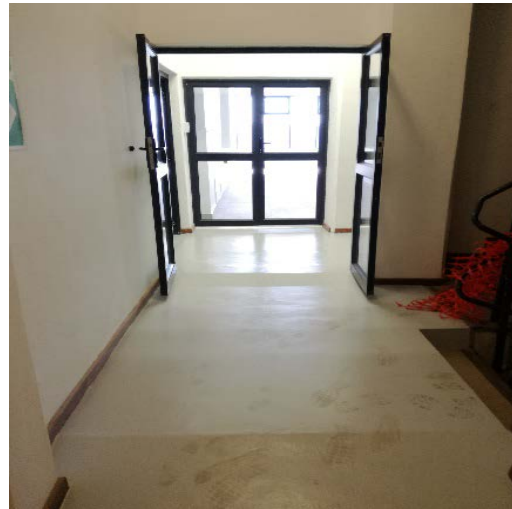


Figure 2: Foyer section Second coat of paint



Figure 3.1: Mezzanine level granite tops.



Figure 3.2: Mezzanine level granite tops.



Figure 4: Sinks not fitting properly in granite tops.



Figure 5: Floor for chemical waste management inside the chemical room

5 MAY 2017



Figure 1: Non-slip tracks fitted on ramp.

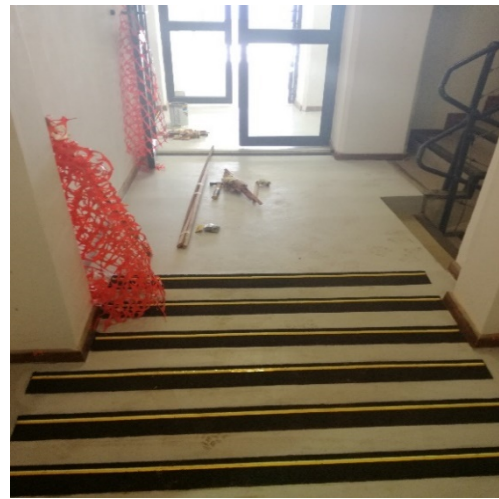


Figure 2: Non-slip tracks fitted on ramp.



Figure 3.1: Air duct insulation.



Figure 3.2: Air duct insulation.



Figure 4.1: Sinks fitted properly after granite adjustment.



Figure 4.2: Taps fitted.

19 MAY 2017



Figure 1: Window burglar guards installed.



Figure 2: Plug points fitted into the granite.



Figure 3.1: Gas lines and regulators installed in the laboratory.



Figure 3.2: gas lines going through the wall.



Figure 3.3: Gas lines going into the gas cylinders from the lab.



Figure 3.4: Gas cylinders in storage area.

26 MAY 2017



Figure 1: Sluice removed in the lab.



Figure 2: Sluice moved into the wash area.



Figure 3.1: Toilet installed outside the coldroom.



Figure 3.2: Sink positioned and plumbing done.



Figure 3.3: Gas leak detectors installed in analytical lab (25 July 2017).



Figure 3.4: Gas partitioning and chains fitted for Chem Eng.



Figure 1: Frame fitted after breaking the wall view 1.



Figure 2: Frame fitted after breaking the wall view 2.



Figure 3: Trunking wire exposed.



Figure 4: Closing the frame gap.



Figure 5: Closed gap view from chemistry room.



Figure 6: Closed gap from analytical room.

20 FEB 2018



Figure 1: Wall replenishing.



Figure 2: Exposed trunking wires.



Figure 3: Completed door.



Figure 4: Opened completed door.



Figure 5: Fitting of the trunking in chemistry room.



Figure 6: Completed trunking in chemistry room.

2 MARCH 2018



Figure 1: Cupboard frames installations.



Figure 2: Frame for side table.



Figure 3: Trunking to be fitted on kitchen counters



Figure 4: Side table granite fitted.



Figure 5: Granite benchtops fitted

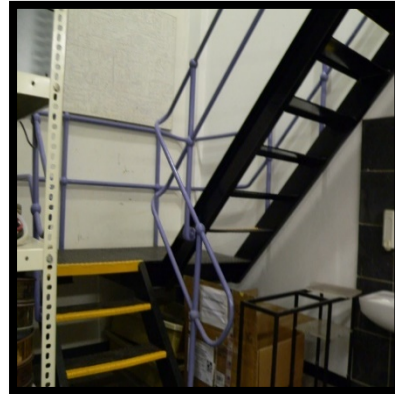


Figure 6: Sink taps fitted

BASEMENT 1 OVERVIEW



MEZZANINE STAIRS



BASEMENT 2 OVERVIEW



GENERAL OFFICE VIEW: MAIN OFFICE AREA



TECHNICIANS AREA

